

Anticyclonic Eco Kit 135 m²

Easy unpacking and assembly!



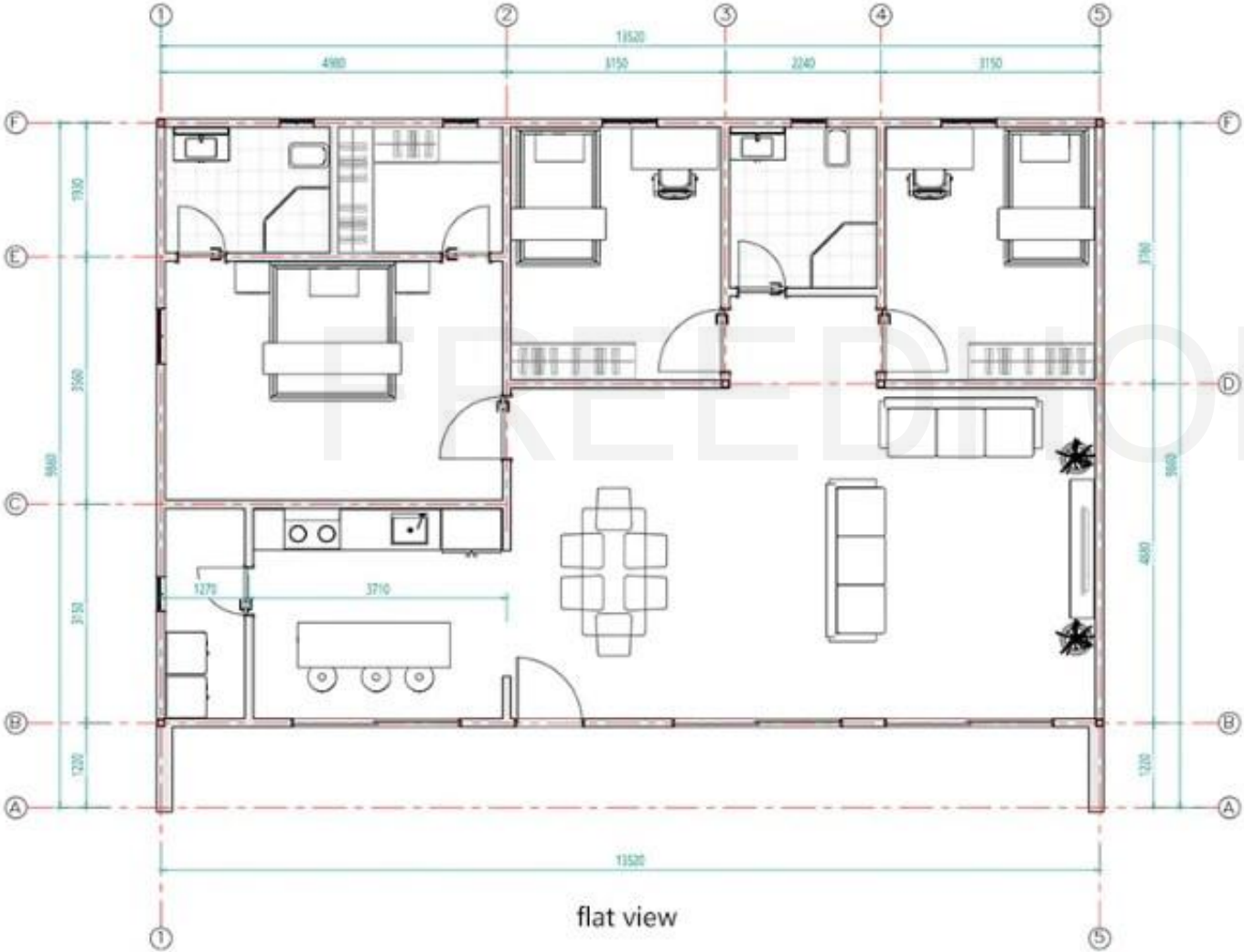






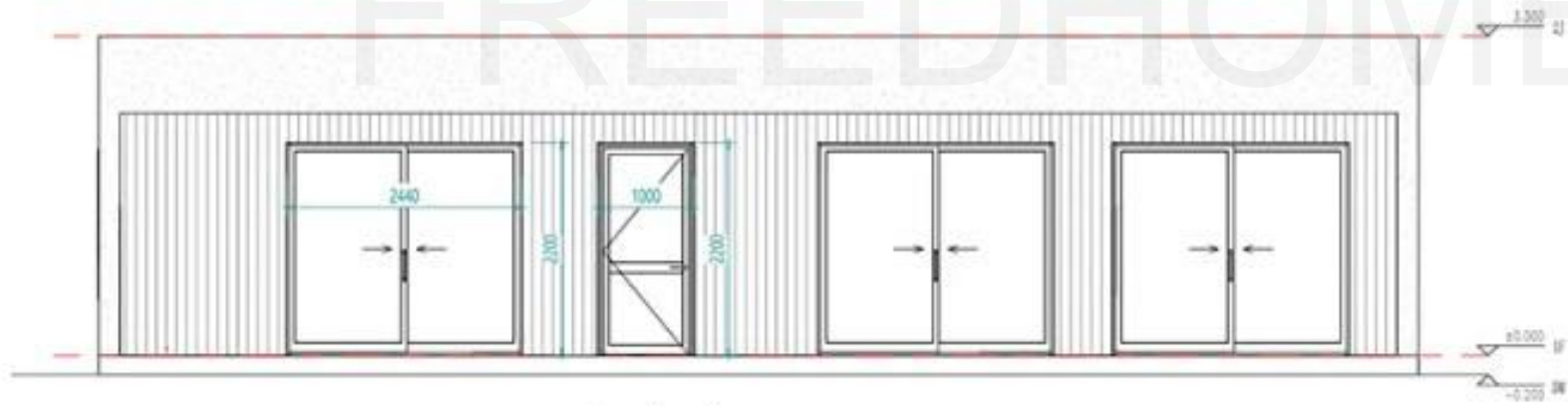


Plans



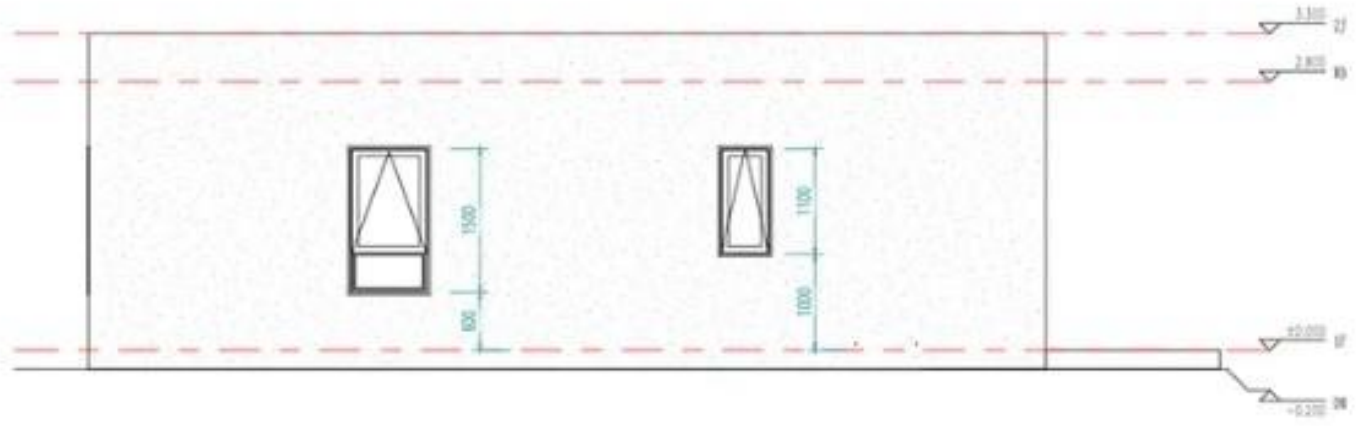


East view

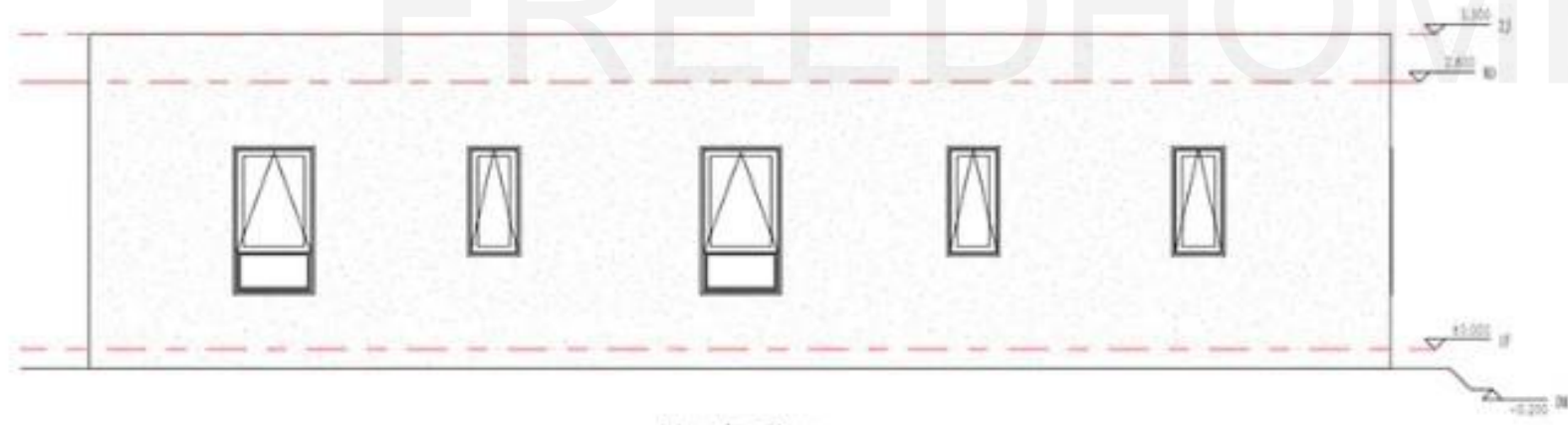


South view

FREEDHOME



West view



North view

FREEDHOME



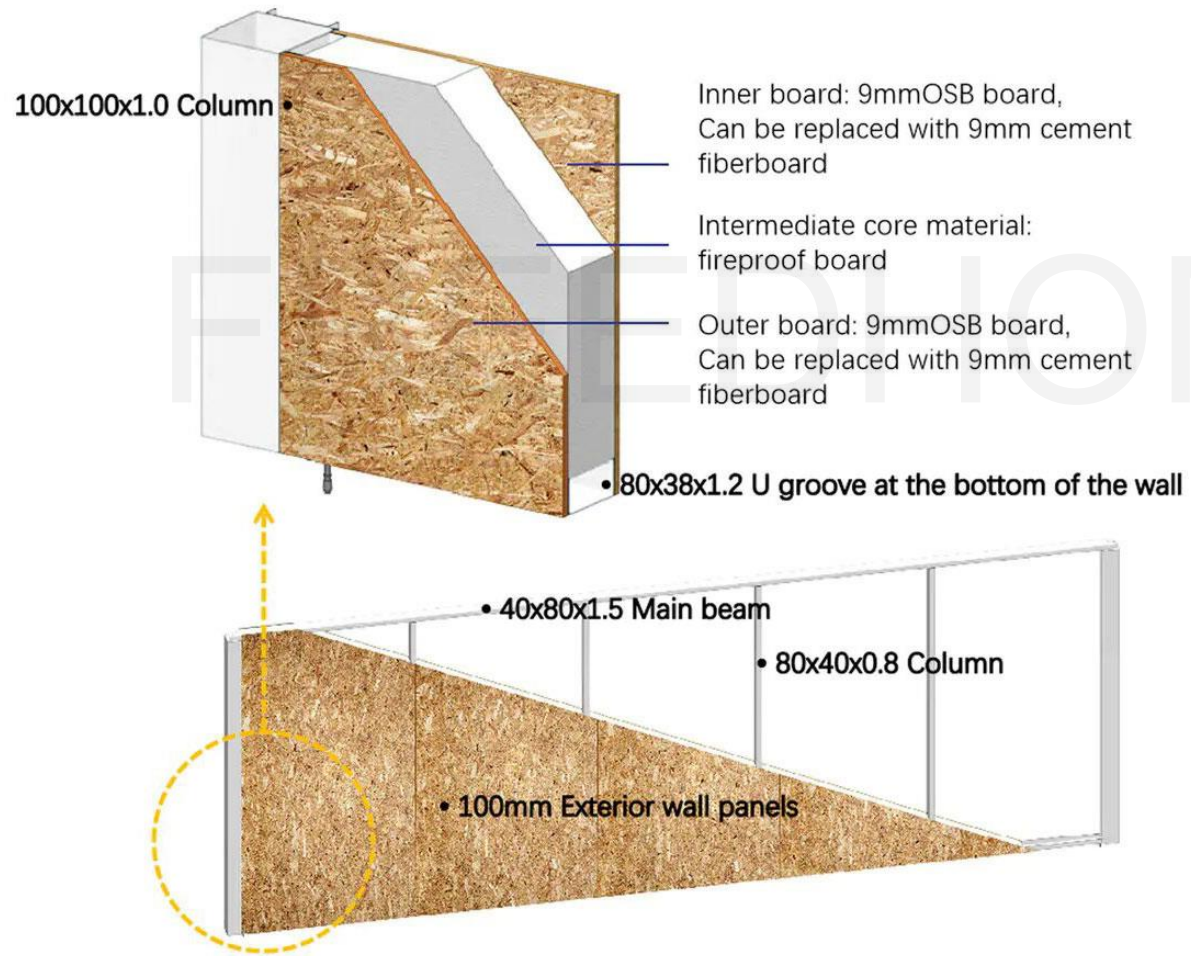
ME



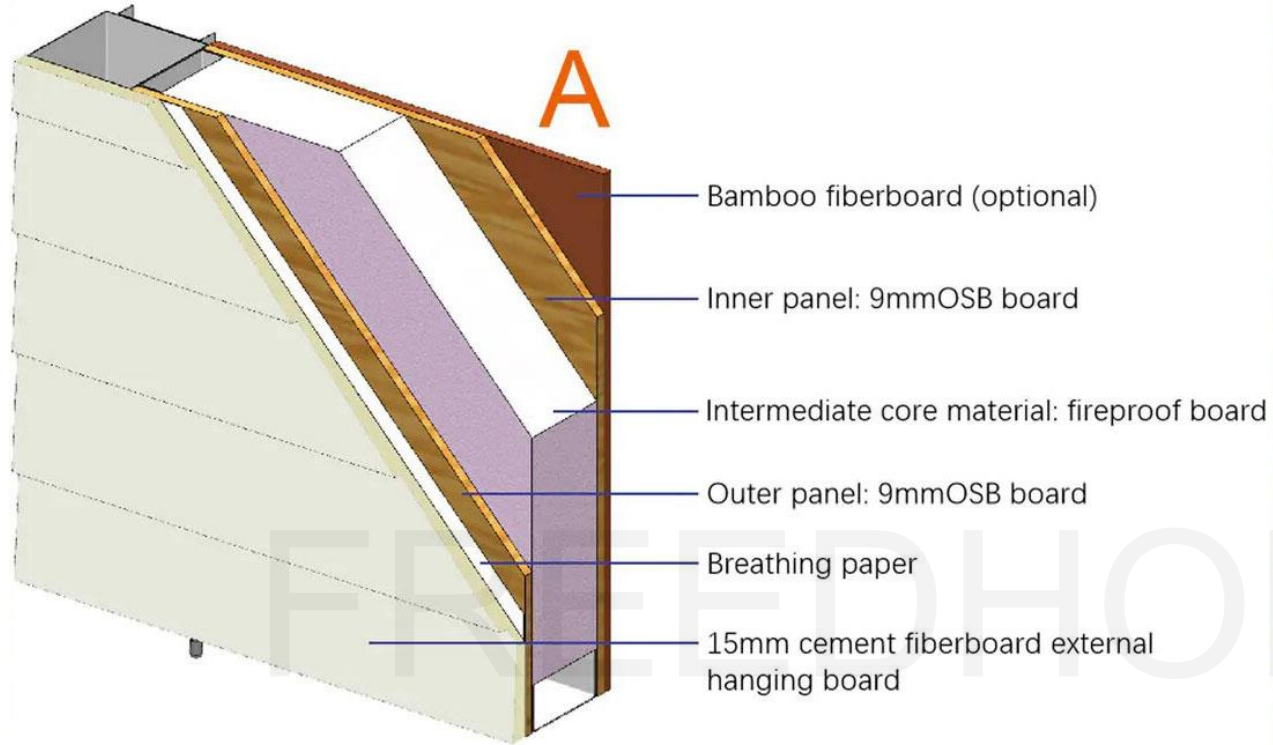
Specifications

WALL SYSTEM

Frame structure: frame + shear plate

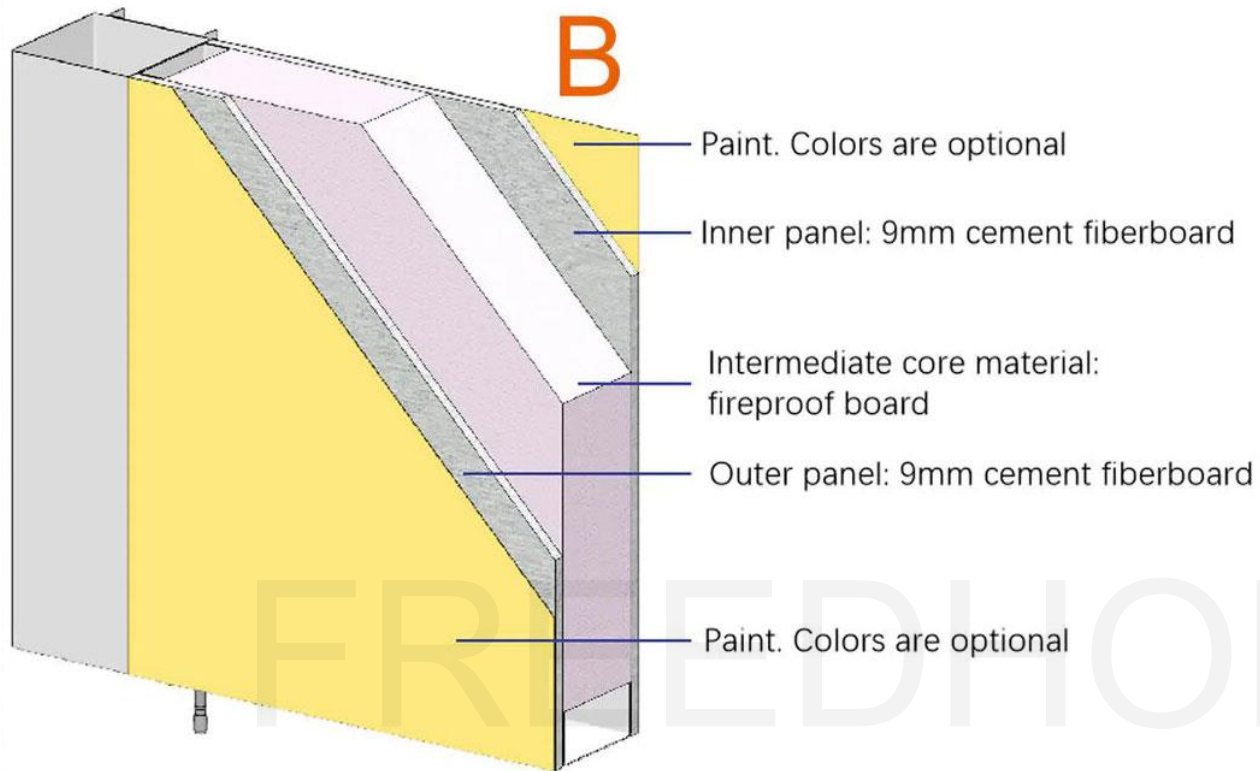


With Optional Materials



Note: The interior wall of the bathroom is made of waterproof coating + waterproof bamboo fiberboard (marble pattern)

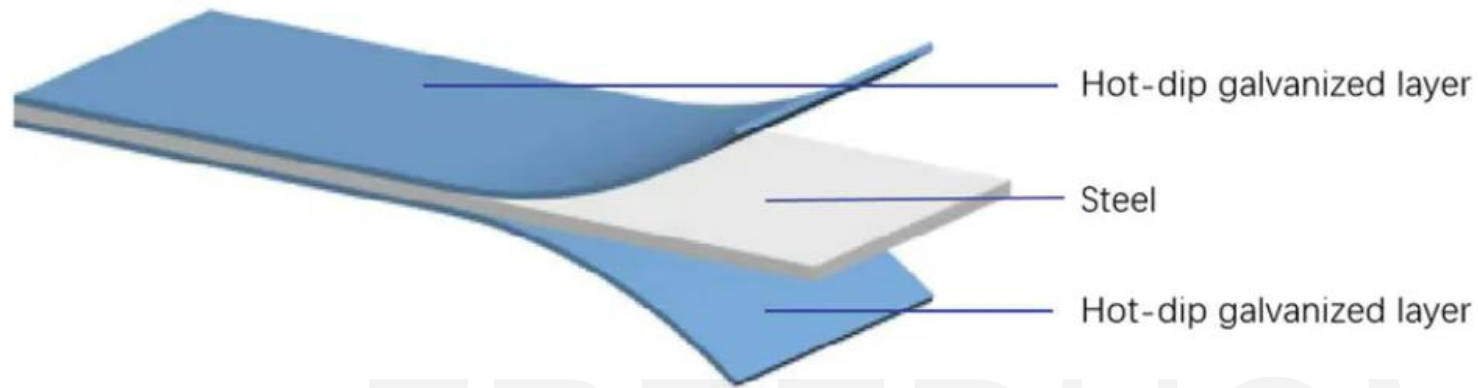




FRUEDHOME



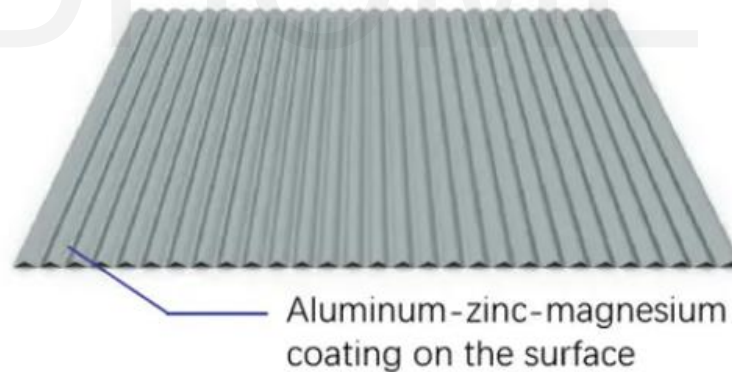
Hot-dip galvanized steel



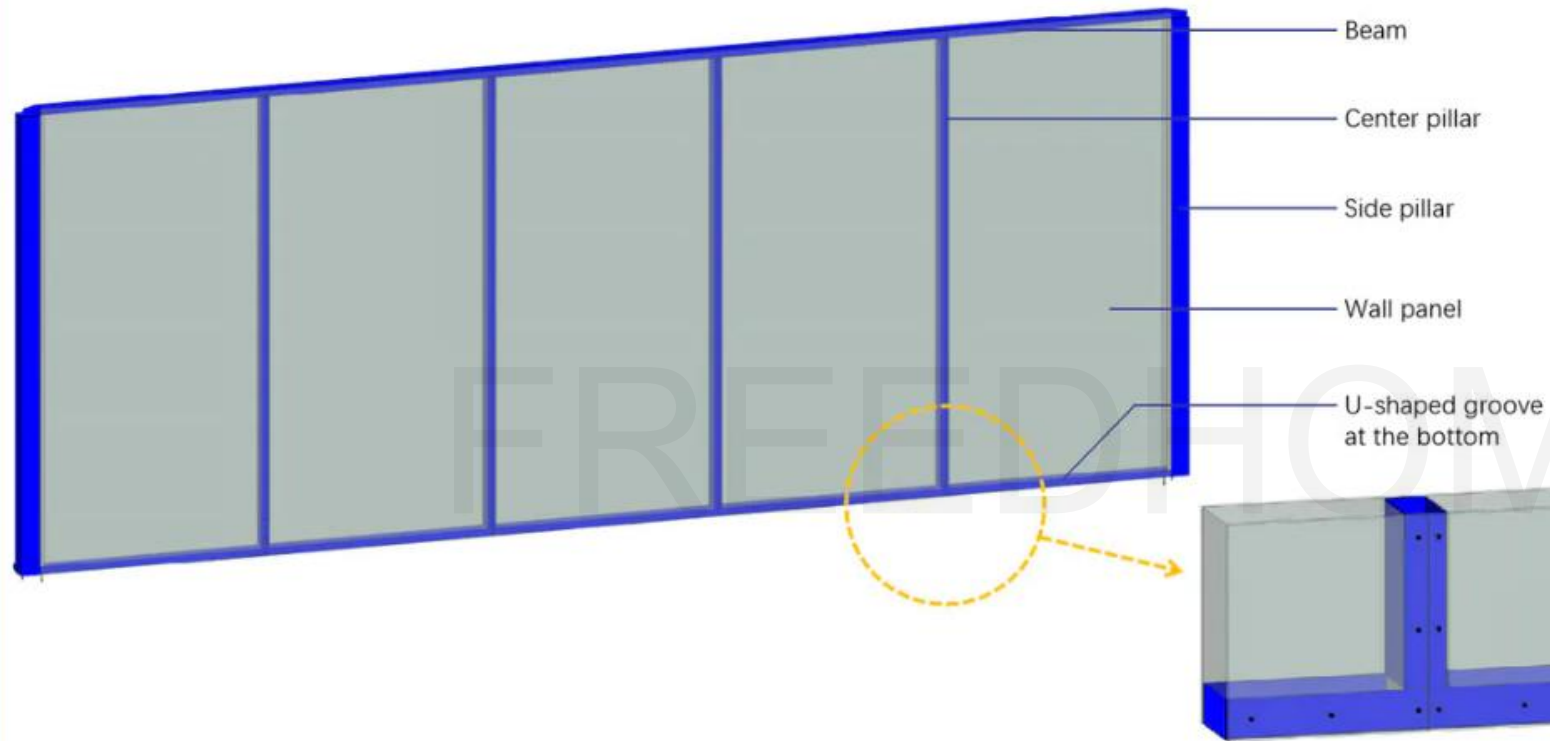
The overall frame of the building is galvanized and sprayed: the hot-dip galvanized coating is even, the adhesion is strong, and the anti-corrosion effect and service life are the best of all methods.

The surface of the roof color steel plate is coated with 150g/m^2 of aluminum-zinc-magnesium layer, sprayed with $25\mu\text{m}$ powder and $5\mu\text{m}$ paint after plating.

Roof color steel plate



Excellent Structural Strength



The lower house structure of the building adopts steel frame + shear plate, and the columns and beams, wall panels and frame are all connected into a whole, which has excellent overall structural strength.

Easy to Install



This product is one of the apartment types of the economic villa series

All components are produced by the factory automation and standardization. The installation process requires low level of professional technology and does not require the assistance of large-scale machinery and equipment. Customers can carry out DIY installation through the equipped installation drawings and enjoy the fun of building a house with their families.



The house covers an area of 135m², eave height is 2.8m, and the indoor ceiling height is 2.7m.

House type is 3 rooms, 2 halls, 1 kitchen and 2 bathrooms.

The house structure adopts integrated modular wall + steel frame + light steel roof, clients only need to install the decorative finishes of internal and external wall on site.

House Specification :

Frame: wall system uses integrated wall+steel frame, roof system uses light steel roof.

Roof : 0.8mm standing seam roofing panels + surface coating is Aluminum Zinc Magnesium galvanized 100g/m²+high weather resistant paint 18/5um. Roof insulation uses 100mm glass wool + Aluminum foil.

Wall : modular wall (Double-sided 9mm OSB board, filled with fire-proof real gold board), and the internal wall uses bamboo fiberboard (cloth pattern), bathroom wall uses waterproof coating + waterproof bamboo fiberboard (marble pattern). The exterior wall uses 12mm cement fiber board + real stone paint, and the balcony is decorated with wood grain board.

Floor: bathroom floor uses ceramic tile, living room uses SPC floor. They can be replaced with other materials.

Electricity : optional + standard is Chinese standard.

Sanitary configuration : 2sets ceramic WC seat,2sets shower,2sets cabinet sink + 2pcs glass shower partition.

Kitchen configuration : floor cabinet + stainless steel sink and faucet.

Parameters

House area :	135m ²	Snow load :	0.00 KN/M2
Eave height :	2.8m	Roof dead load :	0.30 KN/M2
Indoor net height :	2.7m	Roof live load :	0.50 KN/M2
Anti Seismic :	Second level (9 degrees)	Durability :	50 years
Wind-resistance :	200km/h (Level 16)	Loading :	40 ft HQ
Wind load :	250km/h (calculated on 5S wind speed)	other	