

Prefab Eco Kit 148 m²

Easy unpacking and assembly!

Basic Model



ME



E



E



E

Specifications

The house covers an area of 148 m², with an eave height of 2.8 m and an interior ceiling height of 2.7 m.

The house type is 3 bedrooms, 2 halls, 1 kitchen and 2 bathrooms.

The home's structure adopts an integrated modular wall + steel frame + lightweight steel roof, so customers only need to install the decorative finishes for the interior and exterior walls on site.

Frame: the wall system uses an integrated wall + steel frame, the roof system uses a lightweight steel roof.

Roof: 0.45 mm thick, large-wave colored sheet steel, 100 g/m² galvanized aluminum zinc magnesium surface coating + 18/5 um weather-resistant paint.

Mur : modular wall (9 mm double-sided OSB panel, filled with fire-retardant real gold panel). The interior wall uses mastic leveling + latex paint finish, and the bathroom wall uses waterproof coating + waterproof bamboo fiberboard (marble pattern). The exterior wall uses a unidirectional wrap + a 27 mm PU metal sculpted panel.

Floors: the bathroom floor uses ceramic tiles, while the rest of the floor must be maintained by customers on site.

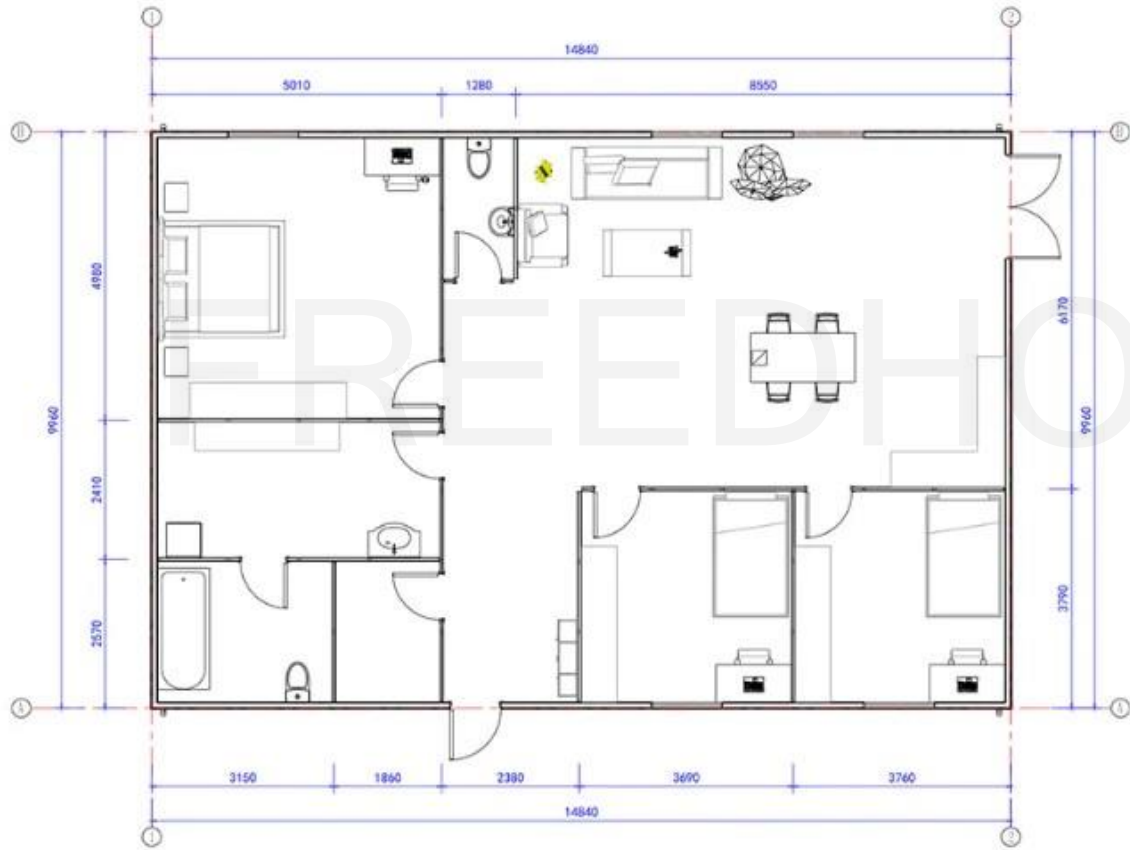
Electricity: optional, CE standard.

Sanitaryware: 2 sets of ceramic toilet seats, 1 shower set, 1 set of vertical ceramic sinks.

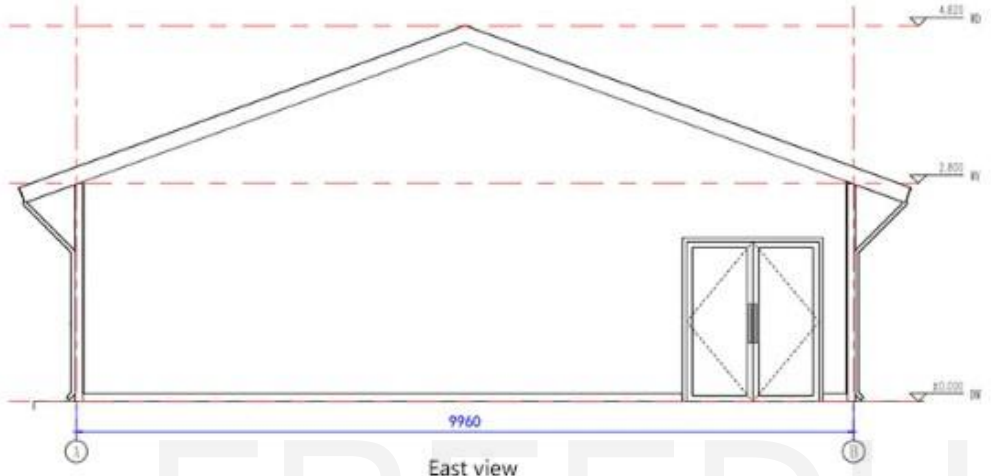
1 cabinet sink set, 1 bathtub set.

Kitchen : floor cabinet-L3340*600mm, wall cabinet-L2000*600mm, stainless steel sink and faucet.

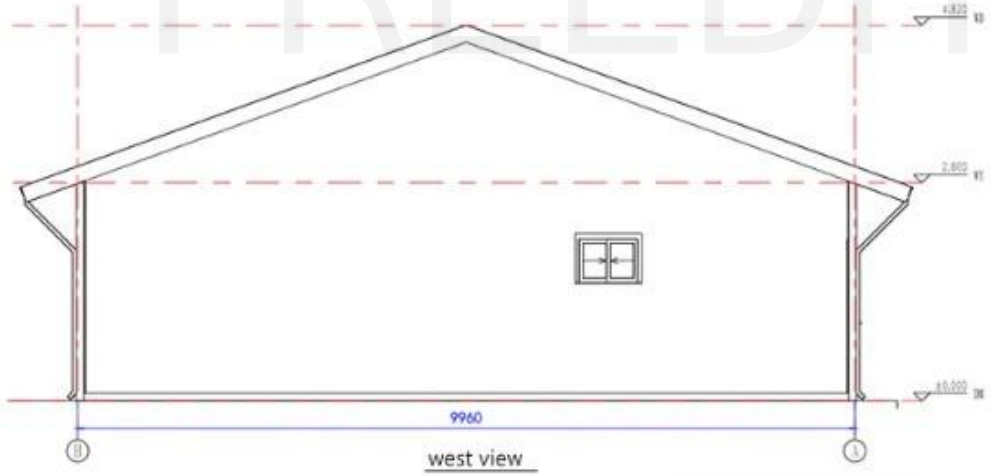
Plans



FREEDHOME

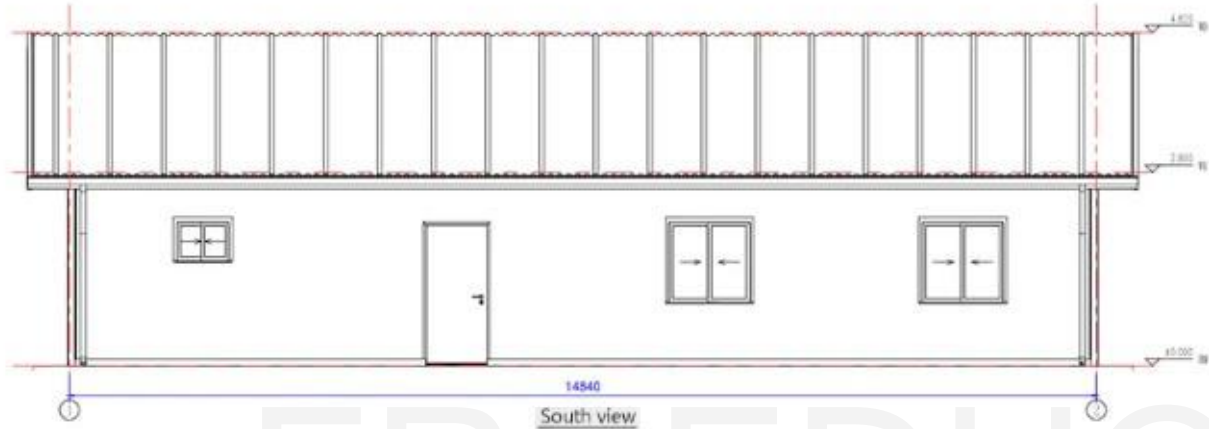


East view

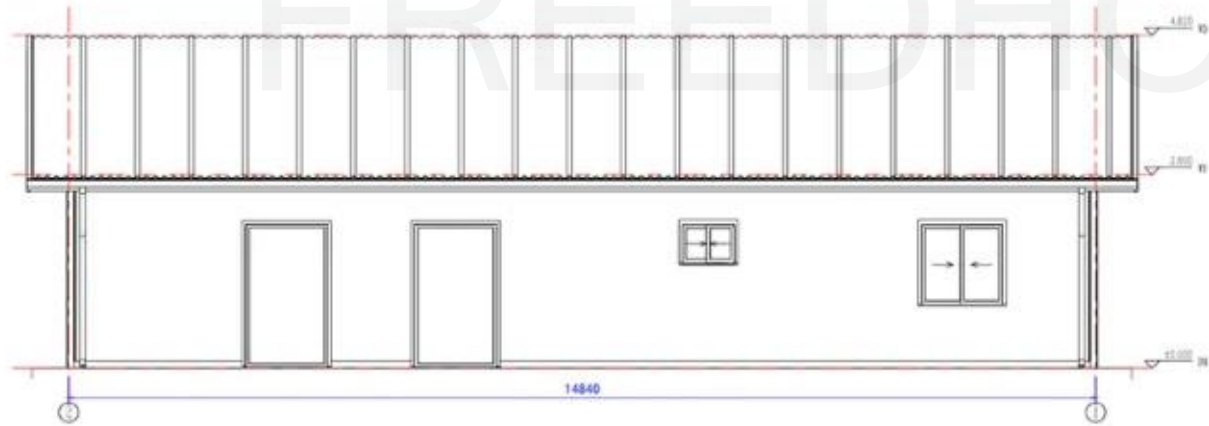


west view

FREEDHOME



South view

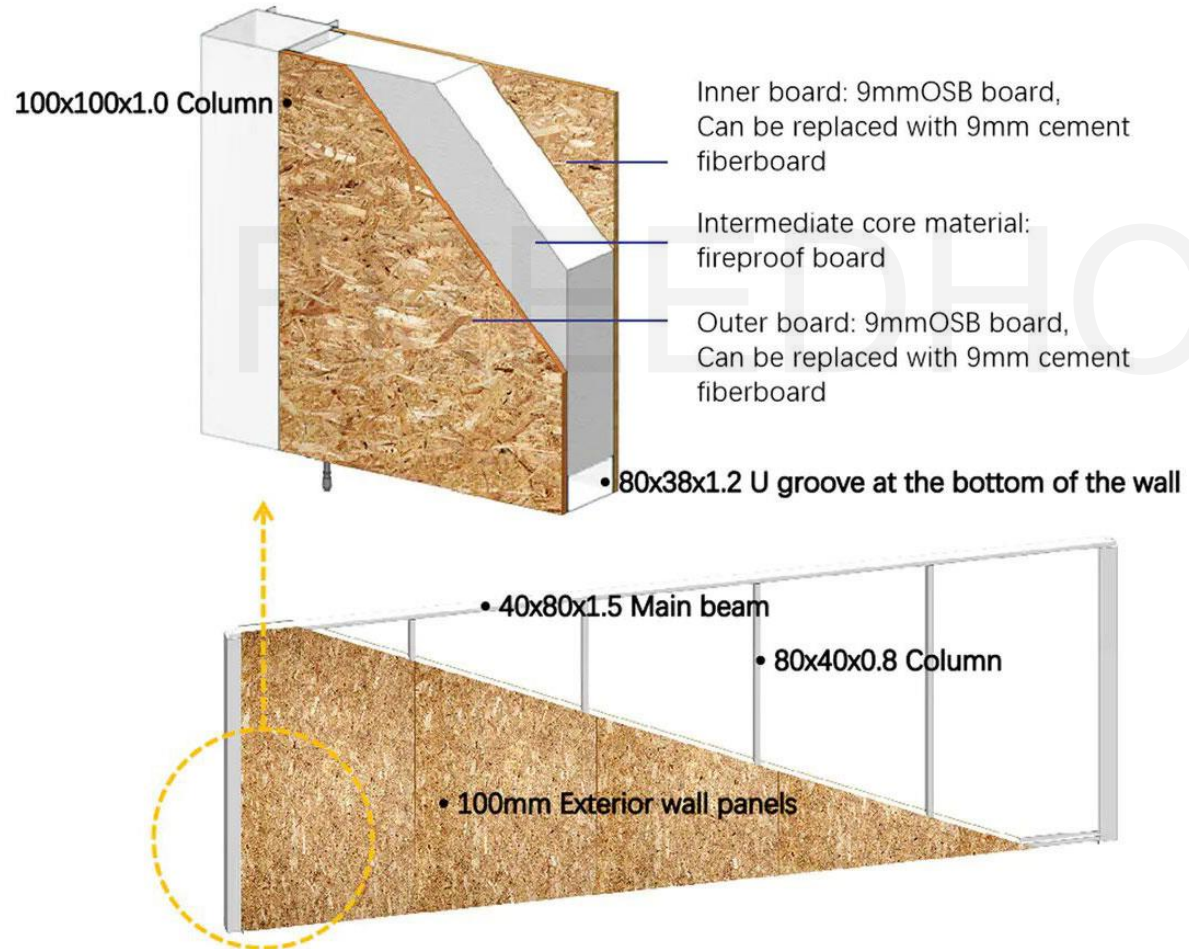


FREEDHOME

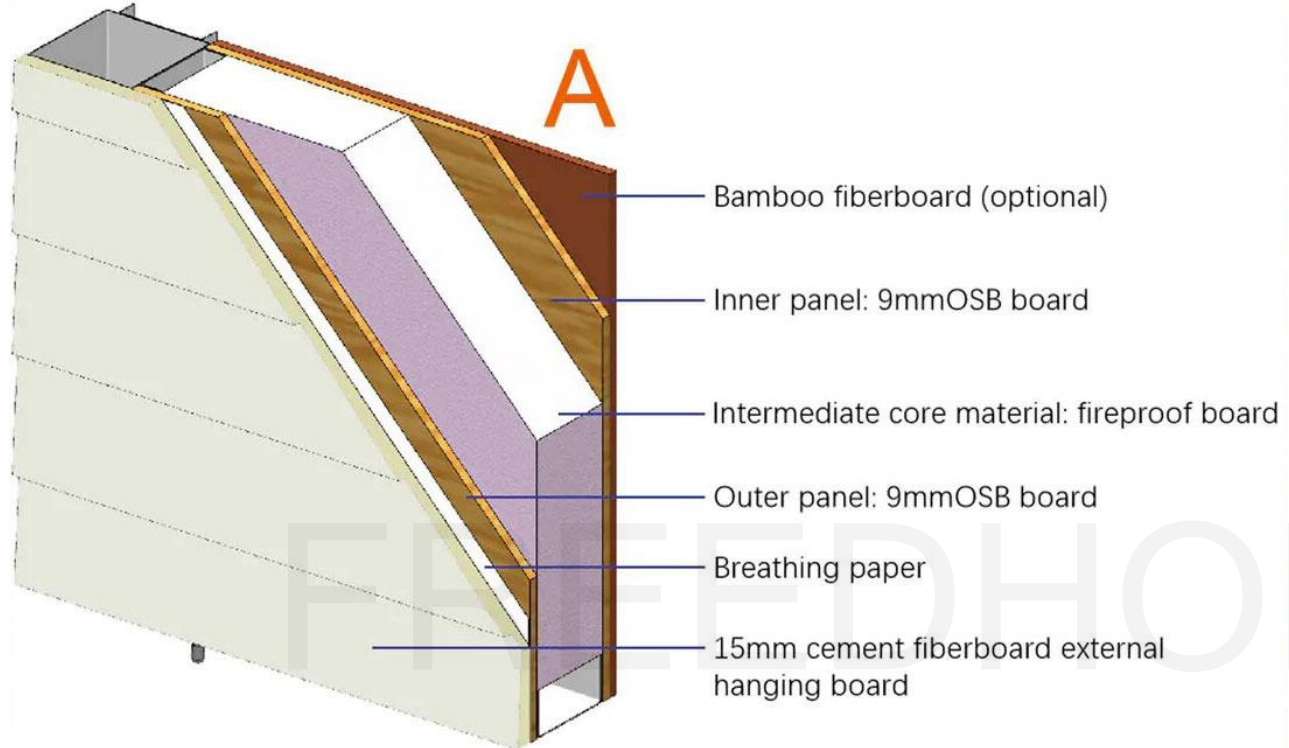
Specifications

WALL SYSTEM

Frame structure: frame + shear plate

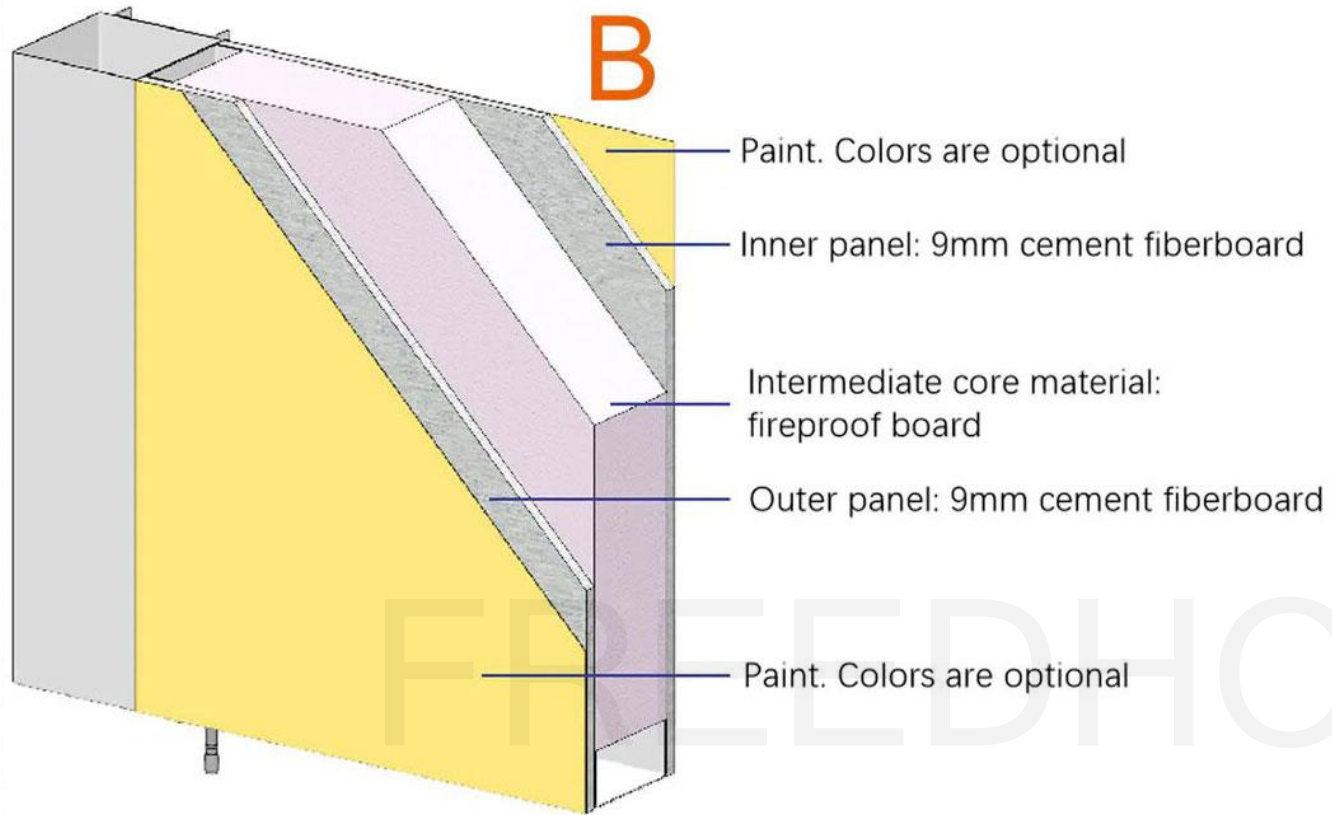


With Optional Materials



Note: The interior wall of the bathroom is made of waterproof coating + waterproof bamboo fiberboard (marble pattern)

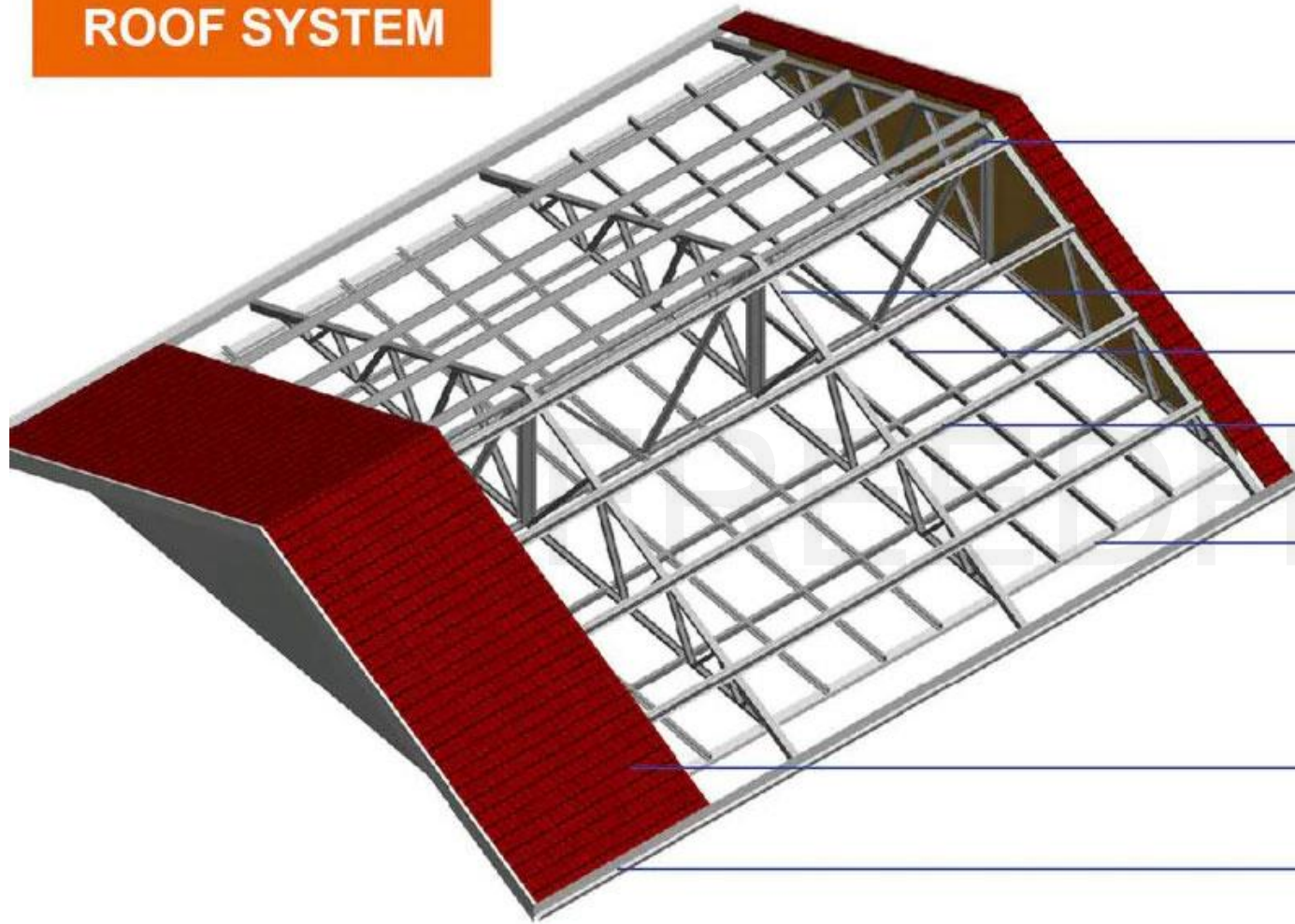




FREEDHOME



ROOF SYSTEM



70 series roof truss

70 series roof truss

70 series ceiling keel

Roof purlin

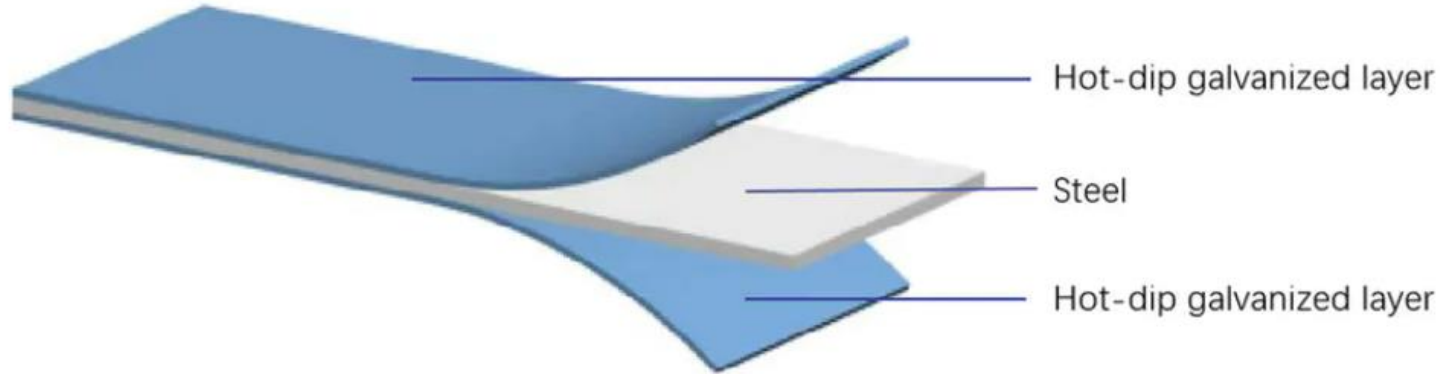
80x40x1.5 Main beam

Roof truss mountain wall:
9mm OSB board/9mm
cement fiber board

780mm type large
corrugated board

PVC ditch

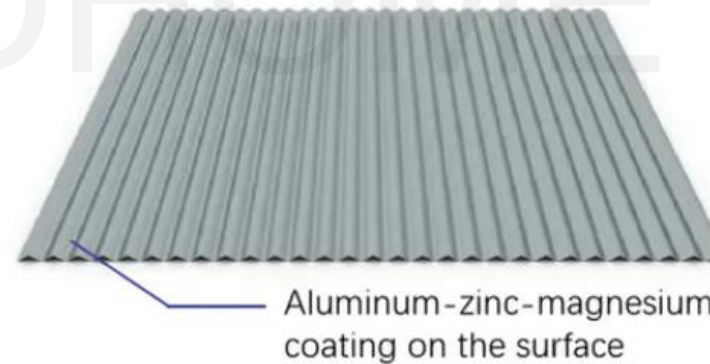
Hot-dip galvanized steel



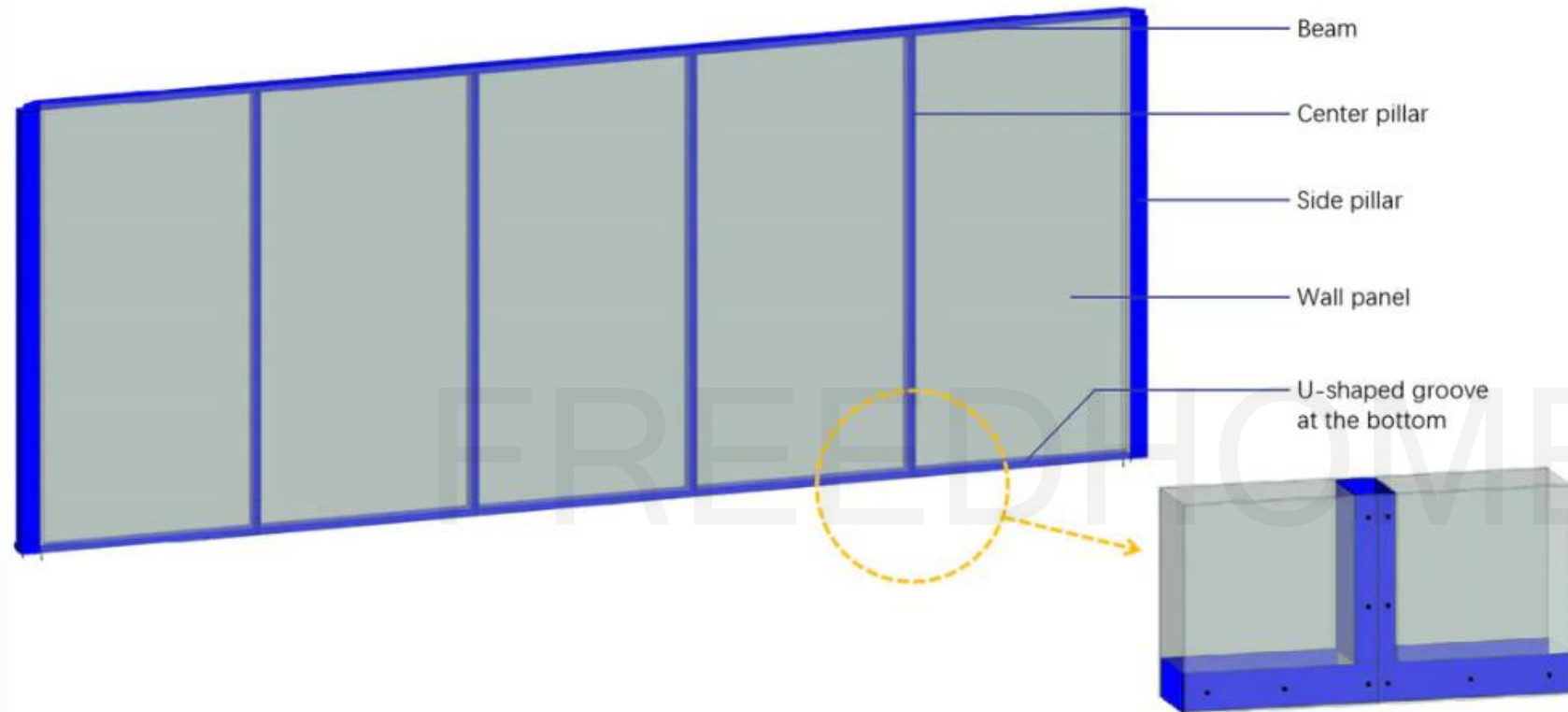
The overall frame of the building is galvanized and sprayed: the hot-dip galvanized coating is even, the adhesion is strong, and the anti-corrosion effect and service life are the best of all methods.

The surface of the roof color steel plate is coated with 150g/m² of aluminum-zinc-magnesium layer, sprayed with 25um powder and 5um paint after plating.

Roof color steel plate



Excellent Structural Strength



The lower house structure of the building adopts steel frame + shear plate, and the columns and beams, wall panels and frame are all connected into a whole, which has excellent overall structural strength.

Easy to install



This product is one of the apartment types of the economic villa series under the PrefabX brand created by PTH. All components are produced by the factory automation and standardization.

The installation process requires low level of professional technology and does not require the assistance of large-scale machinery and equipment. Customers can carry out DIY installation through the equipped installation drawings and enjoy the fun of building a house with their families.



House area :	148m ²
Eave height:	2.8m
Indoor net height:	2.7m
Anti Seismic :	Second level (9 degrees)
Wind-resistance :	200km/h (Level 16)
Wind load:	250~300km/h (calculated on 5S wind speed)

Snow load:	0.00 KN/M ²
Roof dead load:	0.30 KN/M ²
Roof live load:	0.50 KN/M ²
Durability:	50 years
Loading:	40 ft HQ
other	

