

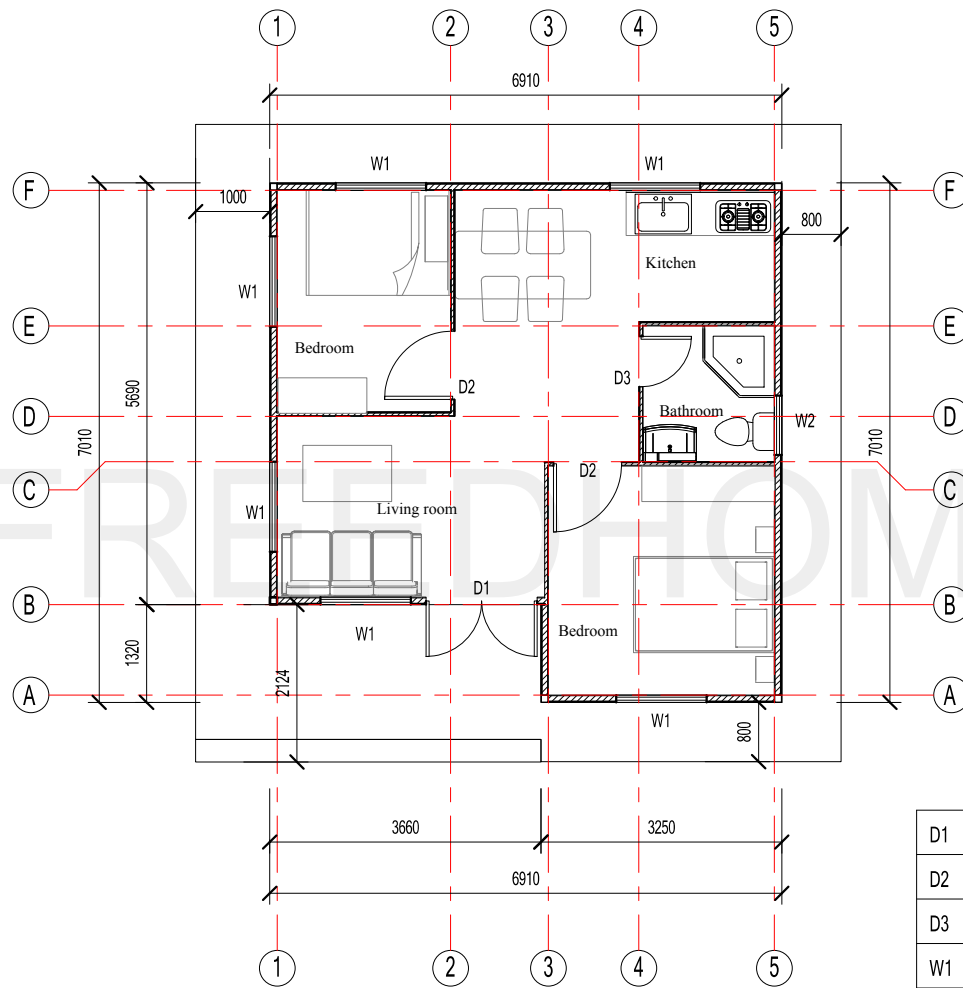
Design description

Building overview:

1. The area of building is 40m², eave height is 2.44m, indoor ceiling is 2.44m
2. Layout: 2 bedrooms, 2 living rooms, 1 kitchen and 1 bathroom
3. The house structure use shear wall-steel frame combination, the inner and outer walls only need to install decorative surfaces on site
4. Load profile:
Wind load: 1.09KN/M² Snow load: 0.3KN/M²
Roof dead load: 0.25KN/M² Roof live load: 0.5KN/M²
Ceiling dead load: 0.2KN/M² Ceiling live load: 0.5KN/M²

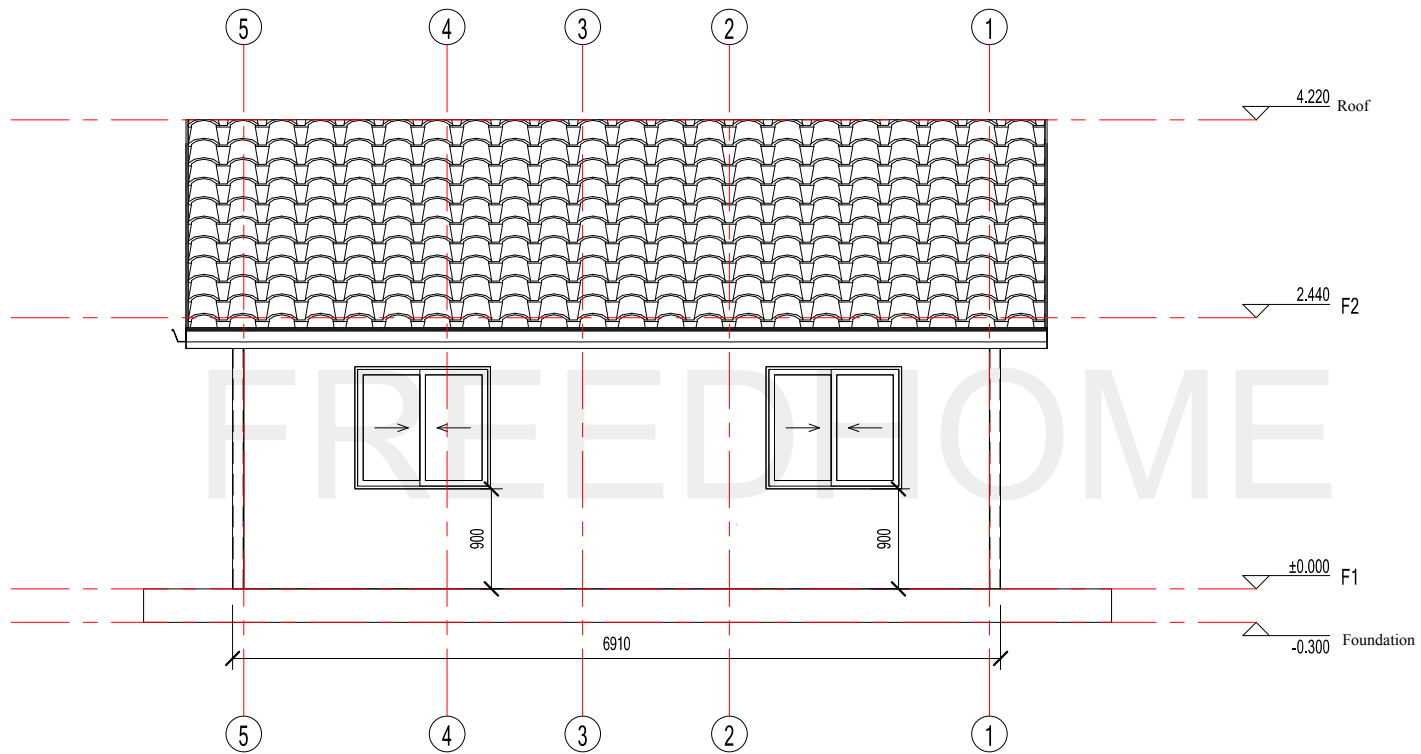
House material:

1. Frame: The wall is a combination of integral modular wall + steel frame, and the roof is a light steel structure.
2. Roof: 0.5mm thick color steel tile, surface coating AZM100g/m² + powder coating 20/5um. Roof insulation adopts 100mm glass wool + 9mm bamboo and wood fiberboard for ceiling
3. External wall: external (9mm cement fiber hanging board) + shear wall board (9mm OSB board, 82mm fireproof board) + internal (9mm bamboo and wood fiber board), bathroom interior wall is waterproof coating + waterproof bamboo and wood fiber board (marble pattern)
4. Inner wall: 9mm bamboo and wood fiber board + 82mm fireproof board + 9mm bamboo and wood fiber board, bath area is waterproof paint + waterproof bamboo and wood fiber board
5. Floor: PVC lock floor
6. Bath configurations: 1 Porcelain Toilet, 1 Shower, 1 Vertical Washbasin
7. Electricity standard: IEC Standard

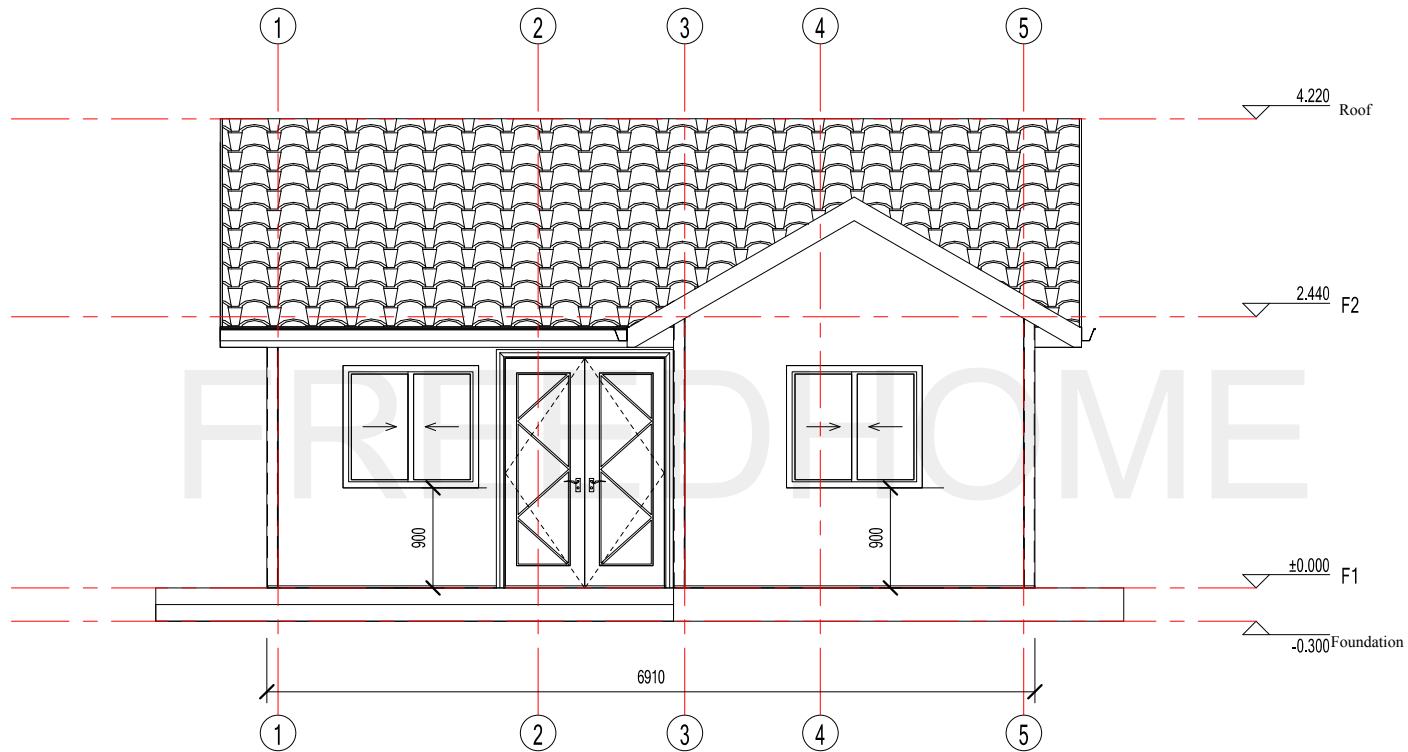


Layout plan

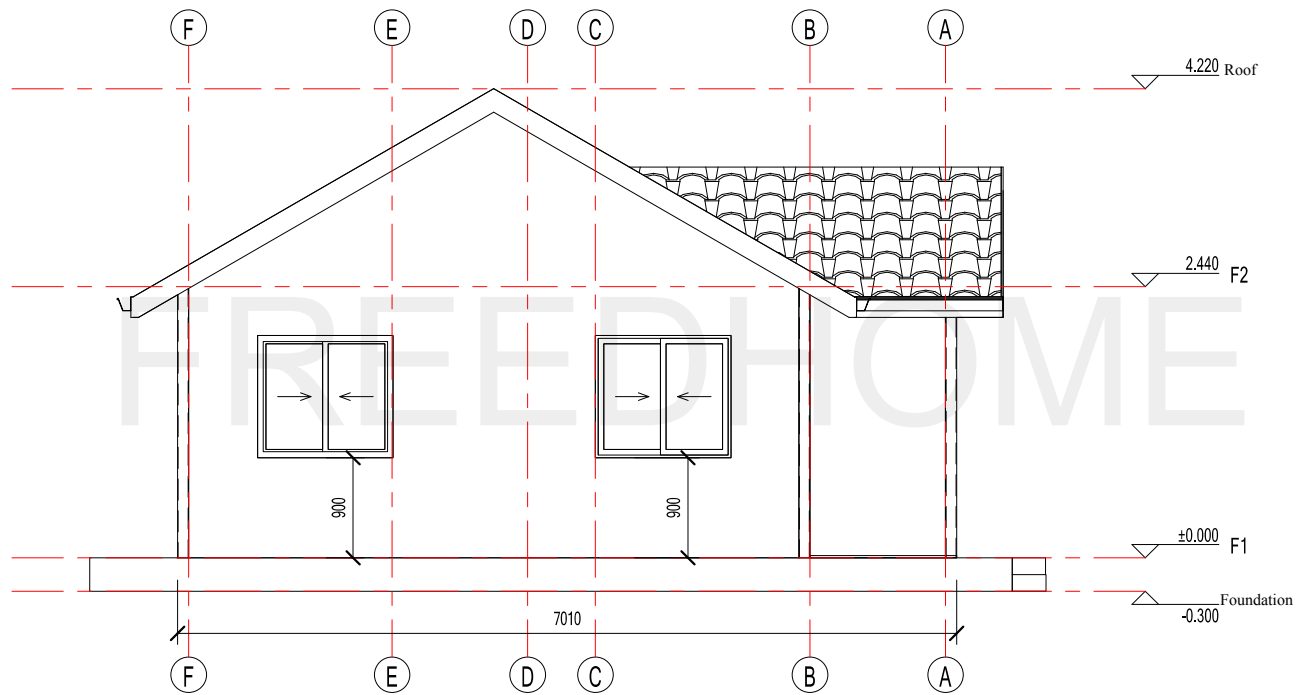
D1	1500x2100 aluminum double door
D2	920x2035 steel single door
D3	840x2035 steel single door
W1	1220x1100 aluminum single glass sliding window
W2	800x400 aluminum single patterned glass sliding window



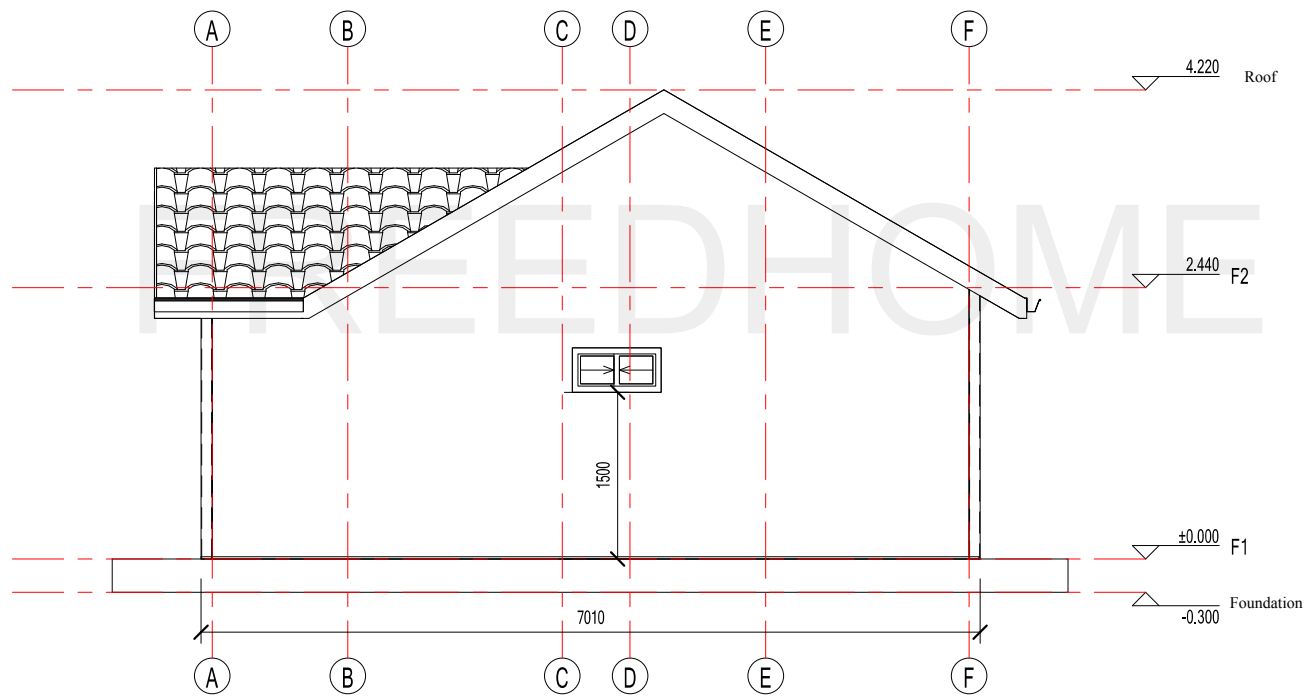
NORTH ELEVATION



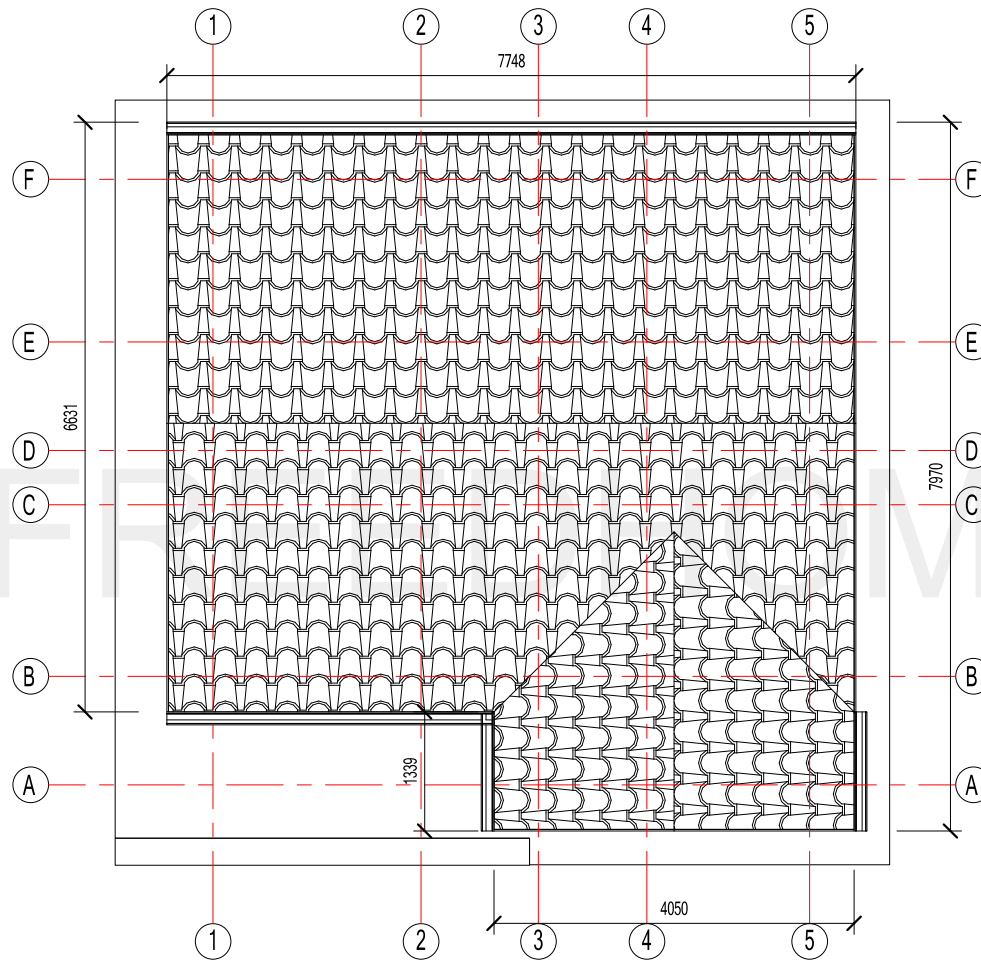
SOUTH ELEVATION



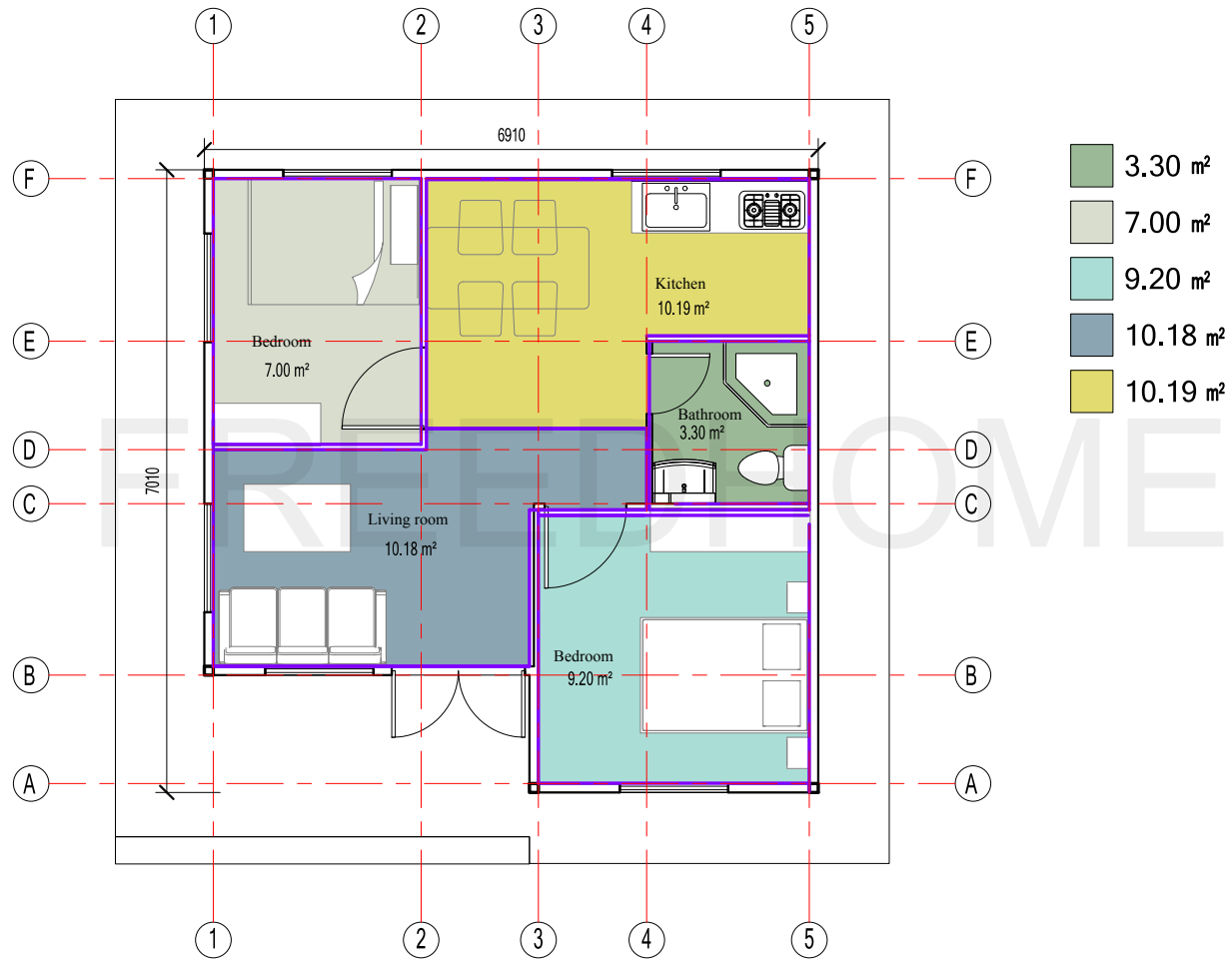
WEST ELEVATION



EAST ELEVATION



Roof Layout



M2 layout



Sectional view



FRONT ELEVATION



ELEVATION



ELEVATION



ELEVATION



ELEVATION



ELEVATION



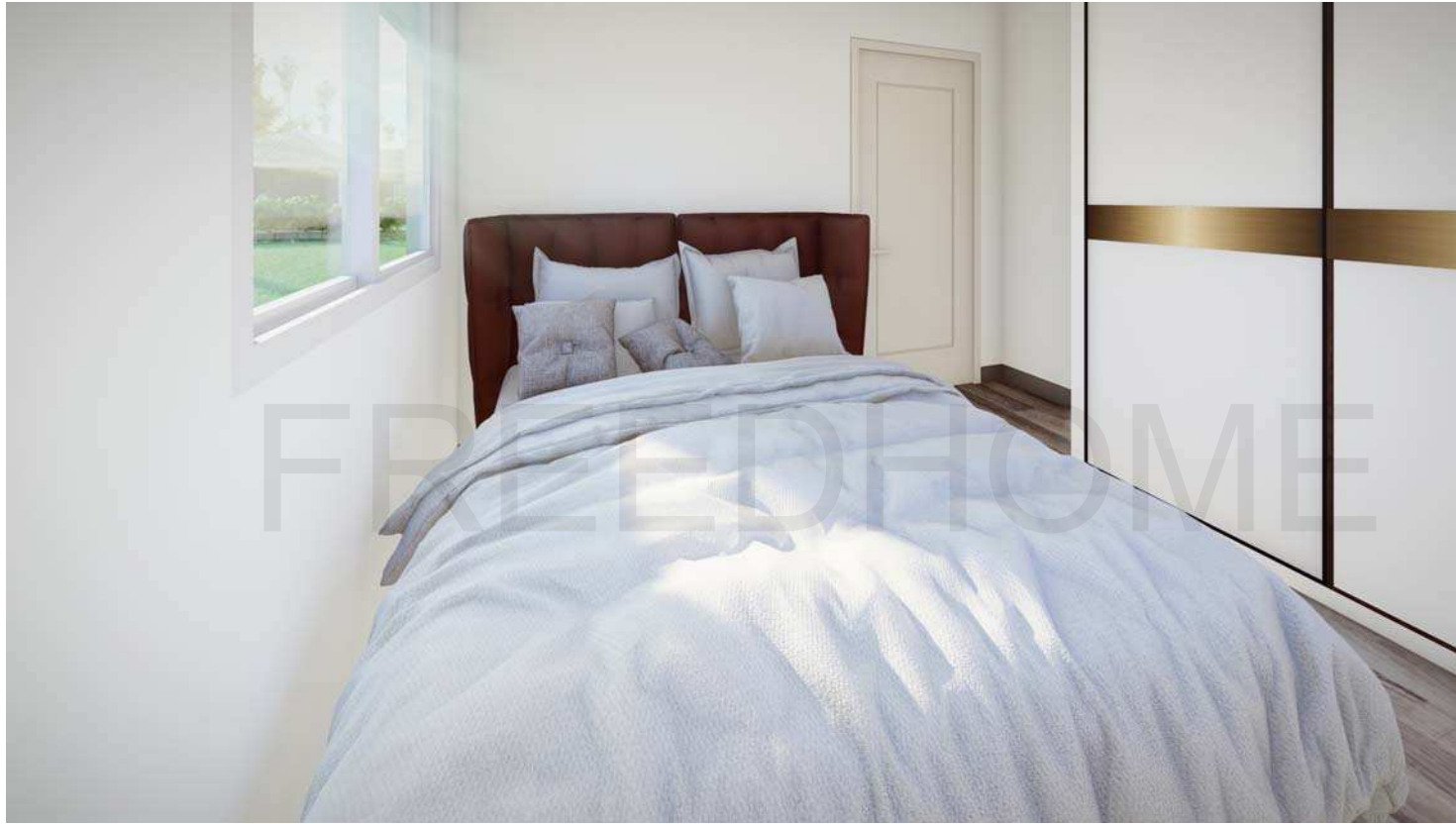
Living room



Kitchen



Bedroom1



Bedroom2



Bathroom